

DURA[®] MHC600 – Manhole Cover

Description

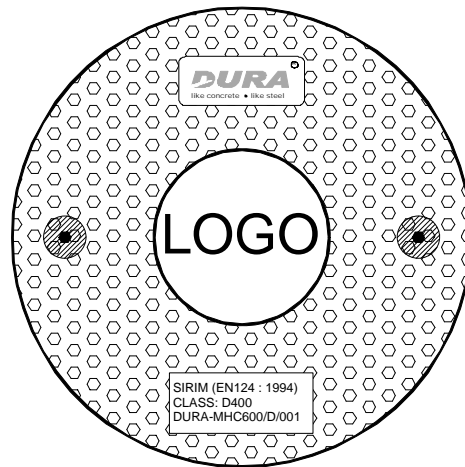
DURA[®] MHC600 – manhole cover is prefabricated using the revolutionary composite material of ultra-high performance concrete and high-carbon-high-tensile steel fibers (UHPdC). It is an excellent solution for maintenance free construction, preventive measures of road thieves seeing that metal made manhole cover is becoming a valuable source of scrap-steel.

Features

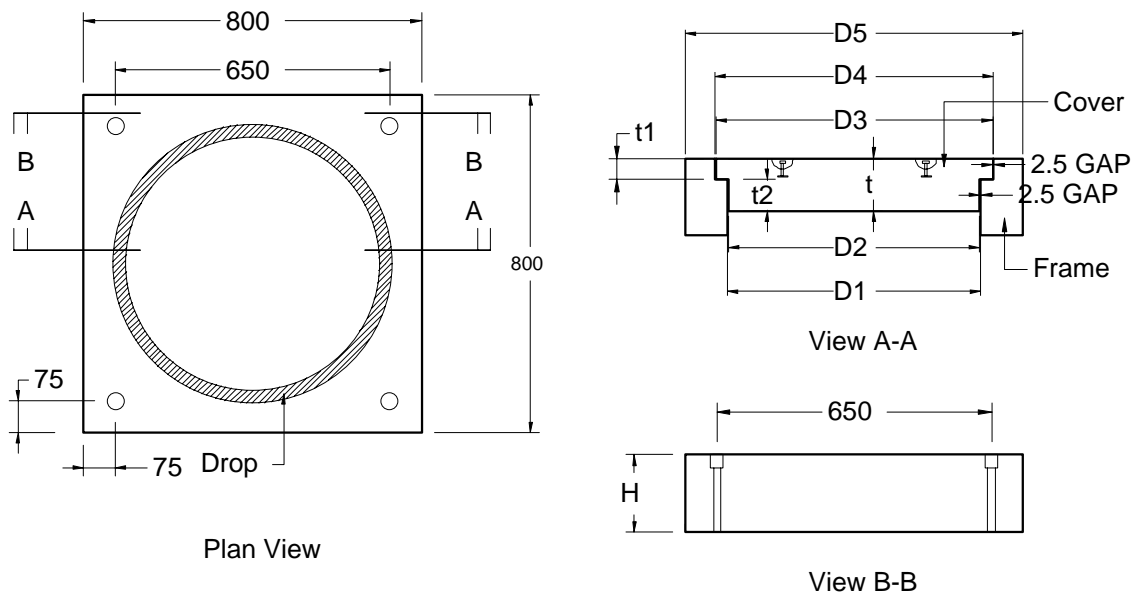
- **DURA[®] MHC600** is a standard precast manhole topping with clear entrance diameter of 600 mm. Each unit consists of a solid circular cover and a square frame with a circular opening at the centre (see Figure 1).
- The UHPdC used for **DURA[®] MHC600** has characteristic compressive strength range between 130 to 150 MPa; characteristic flexural strength of 25 MPa and characteristic cracking strength of 7.5 MPa.
- **DURA[®] MHC600** eliminates the used of conventional steel reinforcing bars and stirrups. All steel fibers used are made from high carbon steel wires with tensile strength of 2300 MPa.
- High quality cover lifting devices are installed into the unit to ensure the safety during lifting and removal prevention from unauthorized personnel.

Advantages of DURA[®] MHC600

- **DURA[®] MHC600** is highly durable and impermeable. It is therefore suitable for use even in harsh environments such as in marine environment or chemical plants.
- **DURA[®] MHC600** is superior in abrasion resistance. It therefore is negligible maintenance, thus give overall cost saving.
- **DURA[®] MHC600** is made from highly ductile UHPdC, therefore it has high fatigue strength and generally ideal for impact loading.
- **DURA[®] MHC600** will not be easily stolen since special lifting device is needed to lift it. Besides, **DURA[®] MHC600** is made from UHPdC and this material does not have the potential theft issue like metal made manhole cover has.
- Logo of owner can be permanently imprinted onto the surface of **DURA[®] MHC600** cover (see example below).



DURA[®] MHC600



Refer to table 1 for technical data

Table 1: Technical Data for DURA[®] MHC600.

		Unit	Classification EN124:1994					
			A15	B125	C250	D400	E600	F900
Recommended Working Load		kN	15	125	250	400	600	900
Cover weight	W₁	kg	17	62	62	76	95	110
Frame weight	W₂	kg	40	81	81	124	167	205
Weight per set	W	kg	57	143	143	200	262	315
Dimensions	D1	mm	600					
	D2	mm	595					
	D3	mm	655					
	D4	mm	660					
	D5	mm	800					
	t1	mm	25	50	50	50	100	100
	t2	mm	0	50	50	75	50	75
	t	mm	25	100	100	125	150	175
H	mm	50	100	100	150	200	250	

Copyrights : Under copyright law, this document may not be copied, reproduced, translated or reduced to any electronic medium or machine readable form, in whole or in part, without prior written consent of Dura Technology Sdn Bhd.

Disclaimer : Dura Technology Sdn Bhd may make improvements and/ or changes to the product described in this data sheet at any time. The data sheet is not part of the documentation for a specific version or release of the product, but will be updated periodically.

Dura Technology Sdn. Bhd. (721531-A)

Lot 304993, Jalan Chepor 11/8, Pusat Seramik Fasa 2, Ulu Chepor, 31200, Chemor, Perak, Malaysia.

T: + (605) 2016813, 2016823 F: + (605) 2016833 W: www.dura.com.my E: dura@dura.com.my